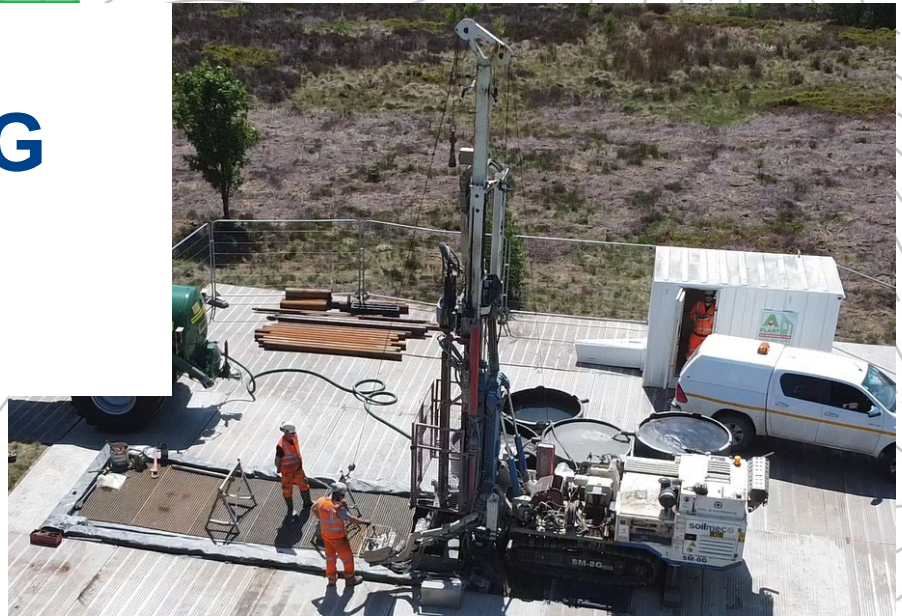


# Soilmec SM8G

Track Mounted Rotary Drilling Rig



## DIMENSIONS

	Travelling	Working
Length:	8295mm	5300mm
Width:	1900mm	2500mm
Height:	2450mm	8295mm
Weight:	10,000kg	

## CAPABILITY

Pull down – 7300 daN  
Pull back – 9800 daN

- 102mm dia 'Geobor S' core to 200m
- 112mm dia 'SWF' core to 100m
- 92mm dia 'PWF' core to 130m
- Tri-cone O/H 216mm dia to 120m

Double clamps with breakout diameter of up to 260mm

## DRILL HEAD

6 Speed Head

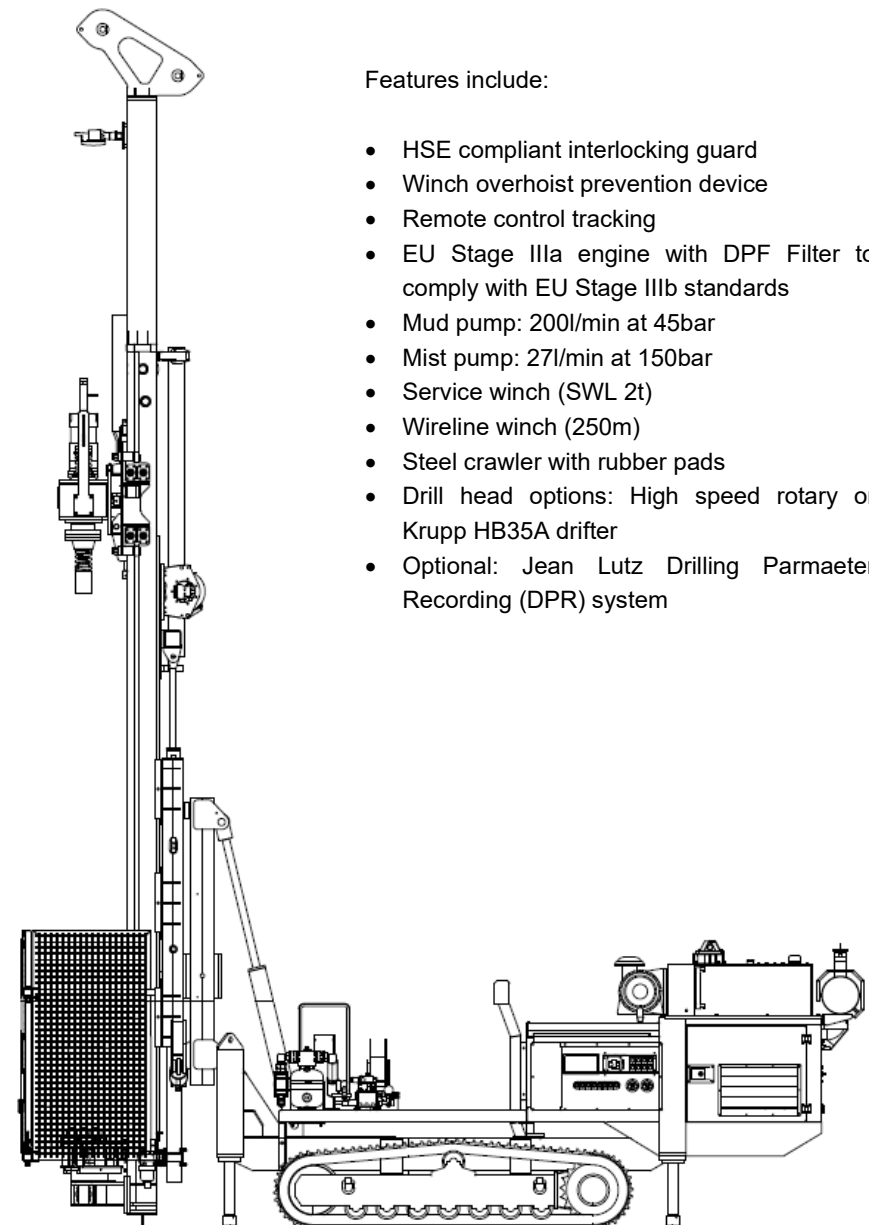
Torque / Speed range:

	Gear 1	Gear 6
Torque	820 daN	45 daN
Speed	50 rpm	920 rpm

Option: Krupp HP35 Drifter head

## COMPANY HOLDING

2No.



Features include:

- HSE compliant interlocking guard
- Winch overhoist prevention device
- Remote control tracking
- EU Stage IIIa engine with DPF Filter to comply with EU Stage IIIb standards
- Mud pump: 200l/min at 45bar
- Mist pump: 27l/min at 150bar
- Service winch (SWL 2t)
- Wireline winch (250m)
- Steel crawler with rubber pads
- Drill head options: High speed rotary or Krupp HB35A drifter
- Optional: Jean Lutz Drilling Parameter Recording (DPR) system